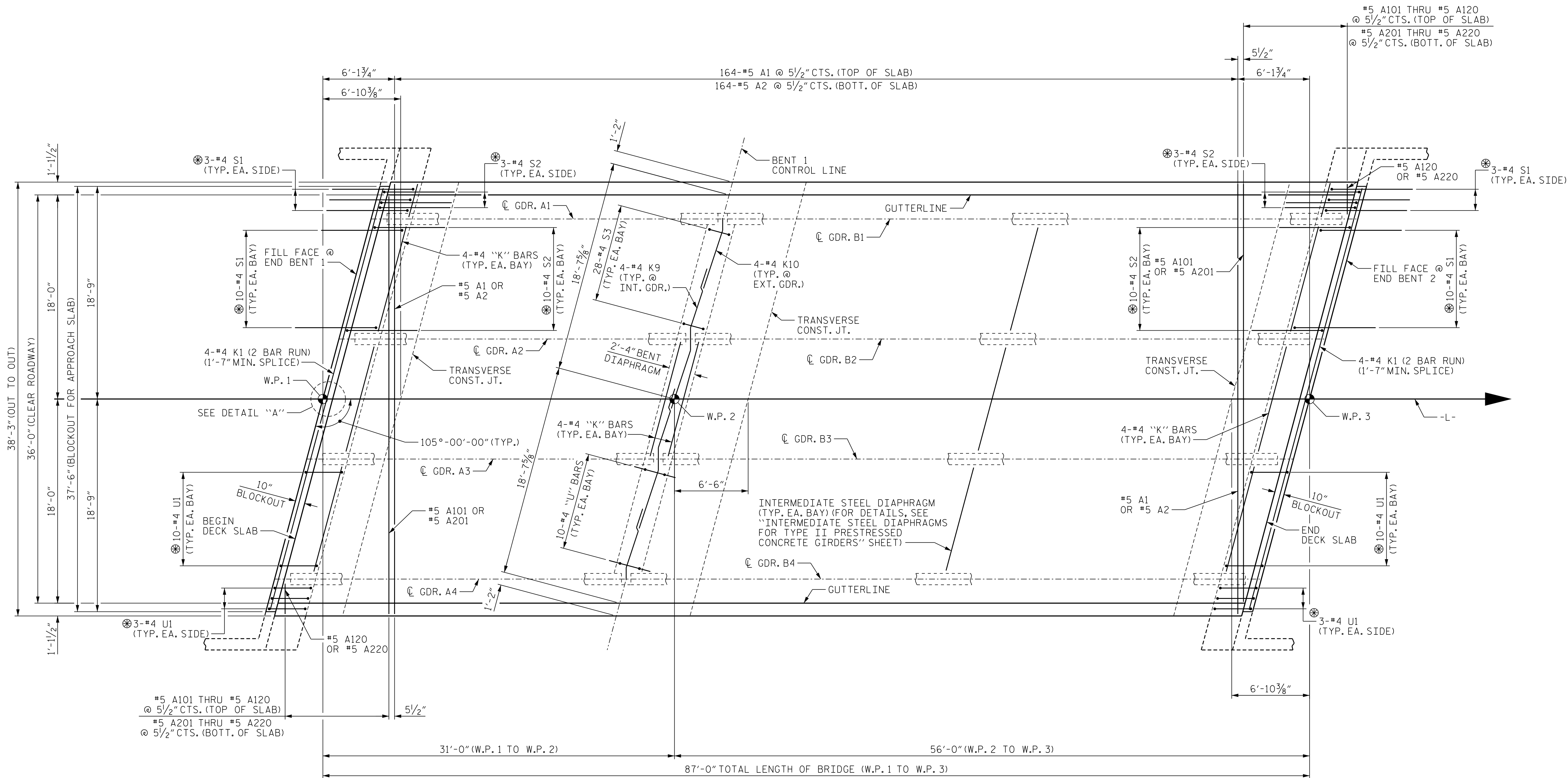


5/7/2025
7:22:21 PM

User: blanning

Filename: N:\NC Bridges\W3001.02_Polk 29\BP14-R041\Structures\01_015_BP14-R041_SMU-S1_740029.dgn



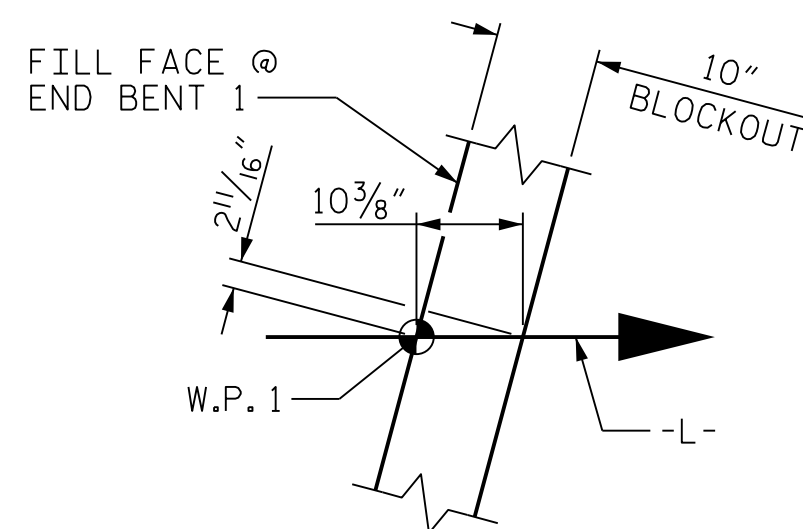
SPAN A

SPAN B

PLAN OF SPANS

NOTES

- FOR REINFORCING STEEL IN BARRIER RAIL, SEE "VERTICAL CONCRETE BARRIER RAIL" SHEET.
- FOR TOP & BOTTOM "B" BARS NOT SHOWN, SEE "B" BAR LAYOUT SHEET 2 OF 3.
- FOR LOCATION OF INTERMEDIATE STEEL DIAPHRAGMS, SEE "FRAMING PLAN" SHEET.
- FOR LOCATION OF TRANSVERSE CONST. JT., SEE "SUPERSTRUCTURE BILL OF MATERIAL".
- #4 S1, #4 S2 & #4 U1 TO MATCH WITH #4 "V" BARS IN INTEGRAL END BENT CAP.



DETAIL "A"

END BENT 1 SHOWN, END BENT 2 SIMILAR

PROJECT NO. BP14.R041

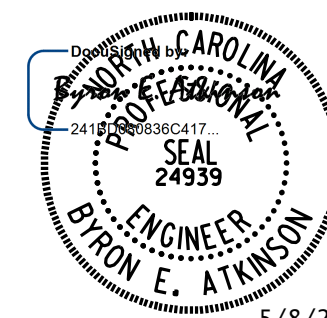
POLK COUNTY

STATION: 20+97.50 -L-

SHEET 1 OF 2

STATE OF NORTH CAROLINA
DEPARTMENT OF TRANSPORTATION
RALEIGH

SUPERSTRUCTURE
PLAN OF SPANS
SPAN "A" AND "B"



5/8/2025

DOCUMENT NOT CONSIDERED FINAL
UNLESS ALL SIGNATURES COMPLETED



MI ENGINEERING
1011 SCHAUB DRIVE, SUITE 100
RALEIGH, NC 27606
(919) 851-6606
FIRM PE NUMBER : P-0671

REVISIONS						SHEET NO.
NO.	BY:	DATE:	NO.	BY:	DATE:	
1			3			S-8
2			4			

TOTAL
SHEETS
29

DRAWN BY : B.E. LANNING DATE : 03/25
CHECKED BY : B.E. ATKINSON DATE : 03/25
DESIGN ENGINEER OF RECORD : B.E. ATKINSON DATE : 04/25